

7 How to upgrade BlueLink firmware

During manufacturing, the BlueLink adapter is preloaded with firmware version actual to that specific time. The customer has the possibility to upgrade the BlueLink firmware to a newer version.

For downloading new version of firmware the customer must have the following:

- New firmware (dfu) file downloaded and saved on the Windows running PC
- Windows running PC with ST Micro Electronics DFU Demonstration program installed
- Mini USB cable to connect BlueLink to the PC
- BlueLink adapter disconnected from the Vehicle bus

7.1 New BlueLink firmware downloading

The latest version of the BlueLink archived (zipped DFU file) firmware may be downloaded using the link below:

https://bh-uploaded-images.s3.us-west-2.amazonaws.com/bluelink251/WliBlueLink_0251.dfu

It will download a DFU file to your downloads folder where you can access it or save to another folder on your PC.

The USB Mini B Cable image is shown below. The USB A side will plug into your PC and the smaller side will plug directly into the BlueLink ELD (wait to plug in until you get to this step later in the documentation).



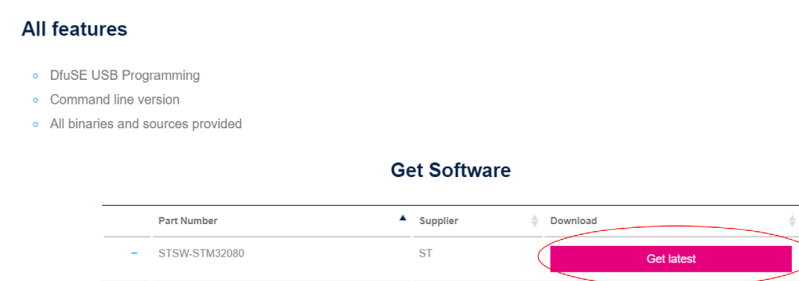
If you do not have a mini USB cable you can purchase one on Amazon using the link below or at most big box electronics stores.

https://www.amazon.com/AmazonBasics-USB-2-0-Cable-Male/dp/B00NH13S44/ref=sr_1_1?dchild=1&keywords=Amazon+Basics+USB+2.0+Cable+-+A-Male+to+Mini-B&qid=1631032108&s=electronics&sr=1-1

Download the DFU Demo software using the link below:

<https://www.st.com/en/development-tools/stsw-stm32080.html#get-software>

Scroll down and click on the pink button “Get latest” as shown in image below

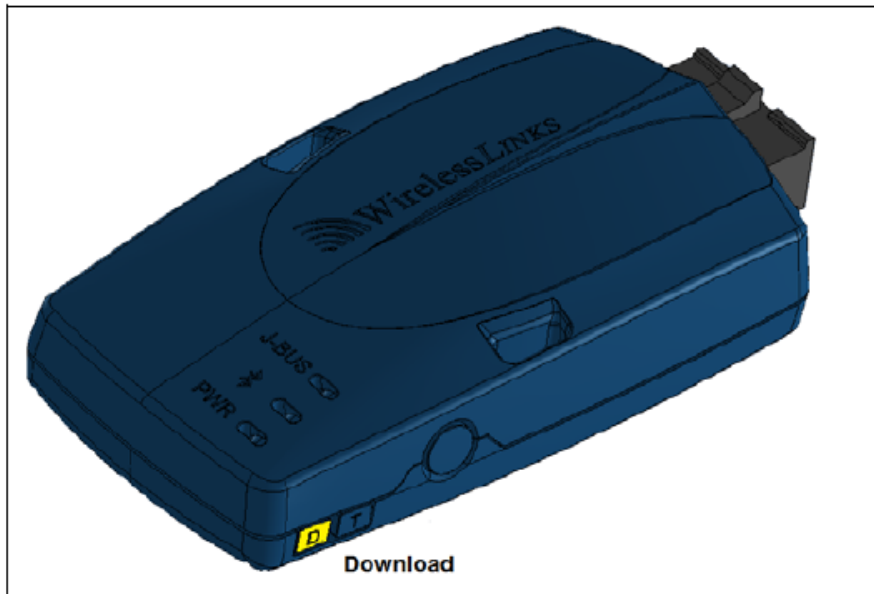


It will ask you for some information to download the software but you can download it without creating an account of your own.

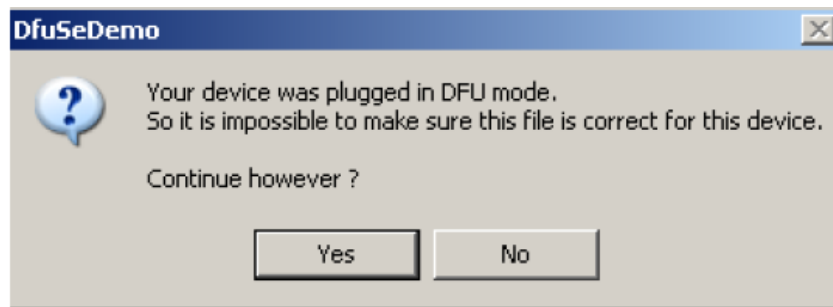
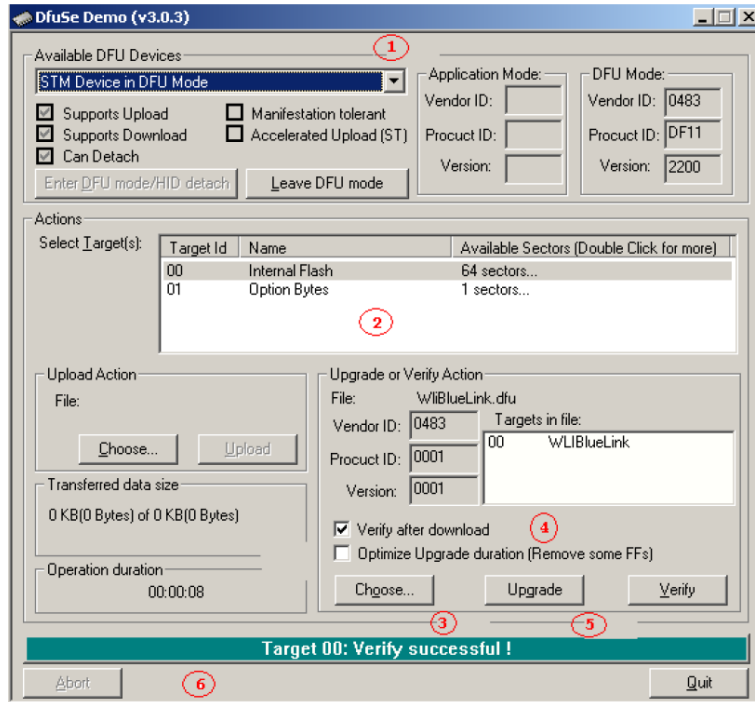
7.3 Downloading new image onto the BlueLink adapter

- Start ST Micro Electronics DFU demonstration Firmware on the PC using start menu (Programs/STMicroElectronics/DfuSe/DFU Demonstration)
- Connect USB cable to the BlueLink adapter while the Download button on the adapter is pressed

You must hold down and keep the download button depressed while plugging in the mini USB cable into the bluelink. If it worked correctly only the green light on the ELD will be on and solid. No other lights will be blinking.



- STM Device in DFU mode will appear in Available DFU devices (see screenshot below, label 1)
 - Target IDs will appear filled in selected targets. Please select “Internal flash” row (label 2)
 - Click “Choose” in “Upgrade or Verify Action” box (label 3) and select the file to be downloaded (e.g., WliDongle.dfu)
 - Check Verify after download (label 4)
 - Click Upgrade (label 5). If appears, click Yes to confirm the file downloading on the device
-



- At the end of downloading the “Target: Verify successful!” will appear on the bottom of the screen (label 6)
- Remove USB.
- Connect USB once more. The device will be started. Please refer “BlueLink LEDs behavior” section that describes the BlueLink LEDs behavior during the firmware running

The blue light and the red light should be blinking. You can now bring your ELD back to your vehicle and use the cable connected to the diagnostic port as you have done in the past.